

PRAIRIE WOODS ENVIRONMENTAL LEARNING CENTER

# Scavenger Hunt



12718 10th Street NE | Spicer, MN 56288 | (320) 354-5894 | [prairiewoodselc.org](http://prairiewoodselc.org)

PRAIRIE WOODS ENVIRONMENTAL LEARNING CENTER

# Scavenger Hunt

SPRING/SUMMER



## Four Steps To Scavenger Success

- 1 Dress for the Season**  
Check the temperature, dress accordingly, apply sunscreen, and step into a nature adventure.
- 2 Detect Nature**  
Observe the sky overhead, the critters crawling beneath your feet, peek under rocks, and gaze at the shimmering waters.
- 3 Capture the Beauty**  
Switch your phone into airplane mode, and give it a well-deserved vacation. Challenge: Only use it to capture photos during this adventure.
- 4 Post your Fav's**  
Flip through your photos and post a few of your adventures. Remember to use #PrairieWoodsFun

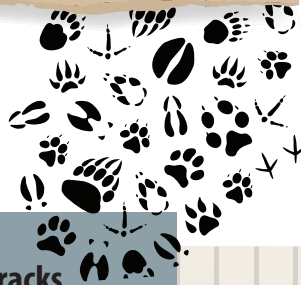
### Butterfly Ballet

Catch a glimpse of the butterfly dance, but no touching! These winged beauties are practicing their flutter.



### Trail of Tracks

Trail of Tracks: Animal footprints tell a story. Find a set and imagine the tale. Having trouble? Go near a body of water. Animal tracks are easiest to spot in mud.



#PrairieWoodsFun

Post & tag your photos later with 

### Shady Shelter

Spot a natural hideout, perfect for tiny critters or a game of hide-and-seek.



### Sunny Stone

Find a rock that's been sunbathing. How warm does it feel?



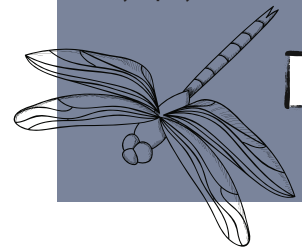
### Blooming Prairie Flower

Seek out the colors of the prairie. Which flower is your favorite?



### Dragonfly Dash

Catch a glimpse of a dragonfly. How fast do they zip by?



### Canada Goose Parade

Spot a family of Canadian geese. How many are in line?



### Marvelous Milkweed

Find a milkweed plant with its distinct leaves and unique pods. Observe any visiting insects or butterflies.



### Fungi Find

Find a mushroom or "fungi" that looks like it belongs in a fairy tale. What magical creature might call it home?



### Litter Patrol

Preserve nature and pick up any litter along the trail and properly dispose in a trash bin. How could it have ended up here?



PRAIRIE WOODS ENVIRONMENTAL LEARNING CENTER

# Scavenger Hunt

FALL/WINTER



## Four Steps To Scavenger Success

- 1 Dress for the Season**  
*Bundle up for the season and step into a world where every natural detail tells a story.*
- 2 Become a Nature Detective**  
*With eyes wide open, observe the branches overhead and the ground beneath your feet, while you discover the secrets of the current season.*
- 3 Capture the Beauty**  
*Switch your phone into airplane mode, and give it a well-deserved vacation. Challenge: Only use it to capture photos during this adventure.*
- 4 Post your Fav's**  
*Flip through your photos and post a few of your adventures. Remember to use #PrairieWoodsFun*

### Deer Trails

Who's been walking here?  
Find tracks in the snow and guess the visitor.



### Oak Leaf

Seek out the distinctive leaves of oak trees. Count how many lobes it has & compare with a friend.



## #PrairieWoodsFun

Post & tag your photos later with 

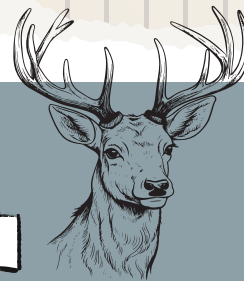
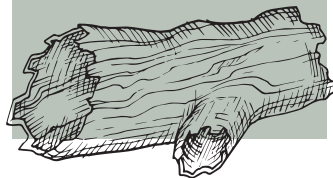
### Whispering Wind

Listen to the wind. Can you hear its winter song?



### Resting Spot

Discover a fallen log or snowdrift shaped like a chair. It's your chilly throne in the winter palace!



### Deer Rub Detective

Find a tree where a deer has left its mark. It's like a secret message!



### Woodpecker Hole

Search for a tree with holes, where woodpeckers dine on their favorite foods.

### Search for Scat

Be careful not to touch it! Instead, observe its size, shape, and any clues about the animal that left it behind. Can you identify the animal?



### Buried Burrow

Find where an animal takes shelter for the winter. For burrows, look around the shoreline of Kettle Lake.



### Quest for the Nest

Find a hidden bird's nest. Can you guess which bird might have built it? Keep your eyes peeled for the feathered owners.

### Milkweed Pod

Look for a milkweed pod that has burst open to release its silky seeds. Can you find one with seeds still attached?





*Scavenger Scribbles*